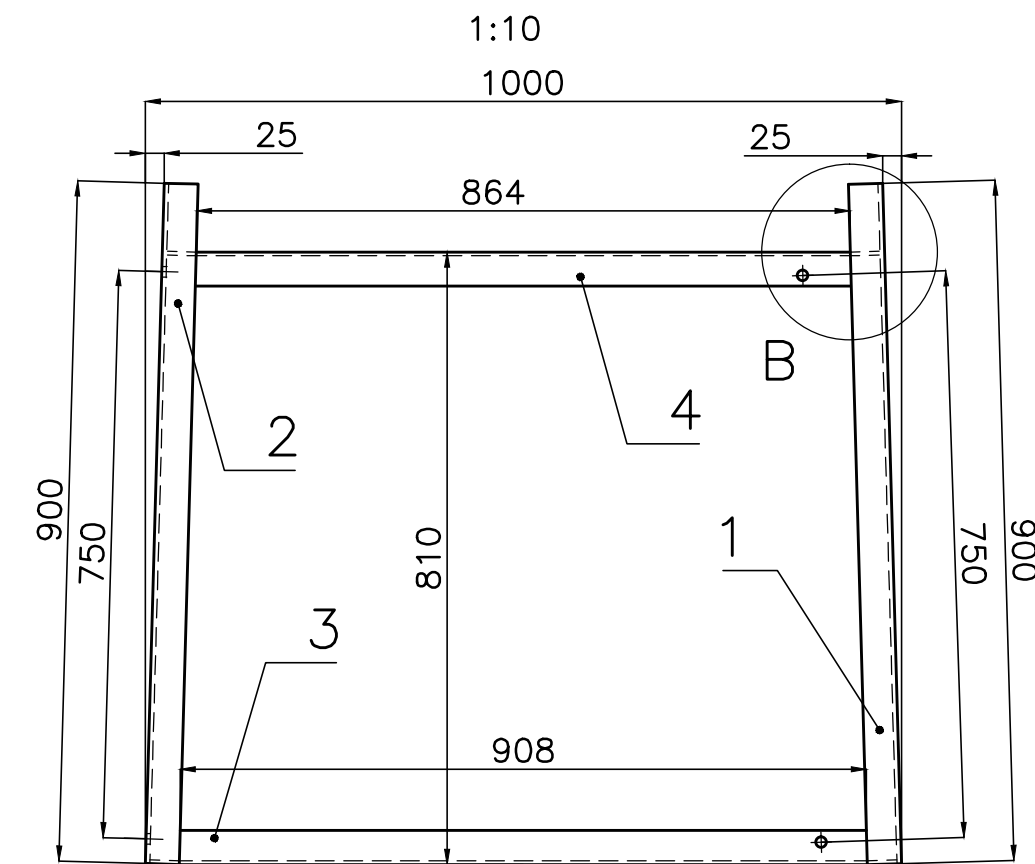
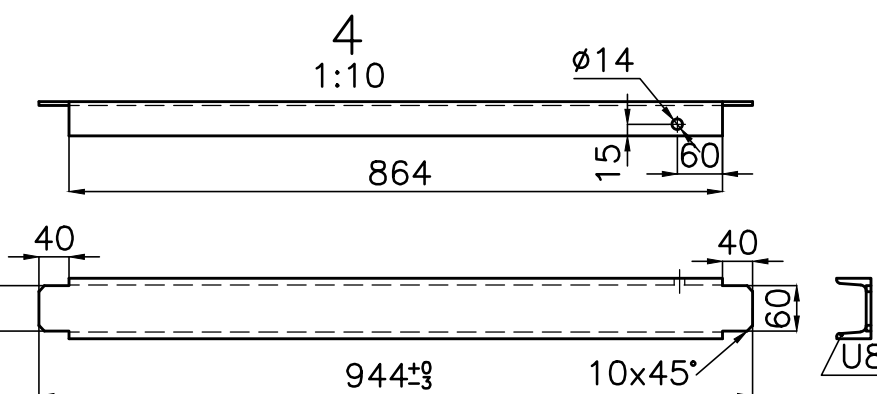
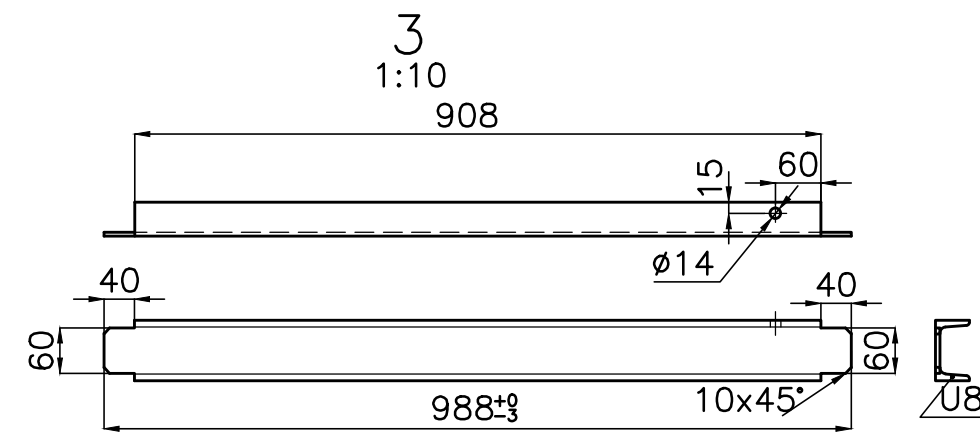
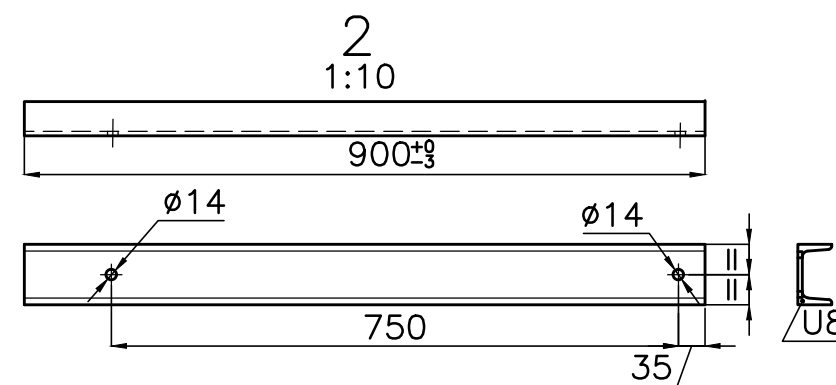
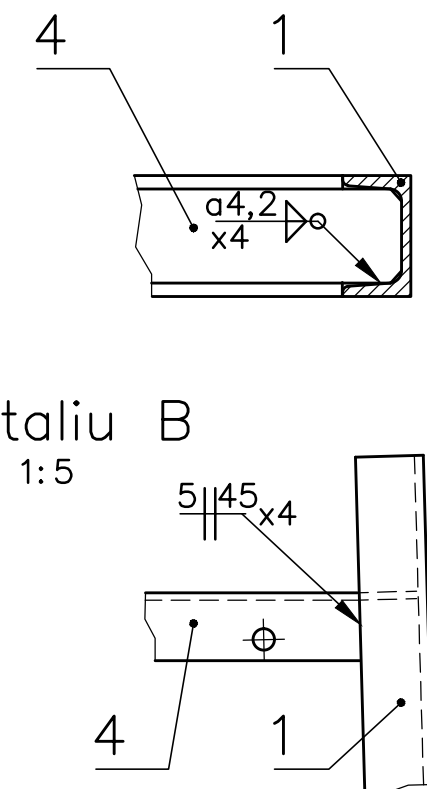


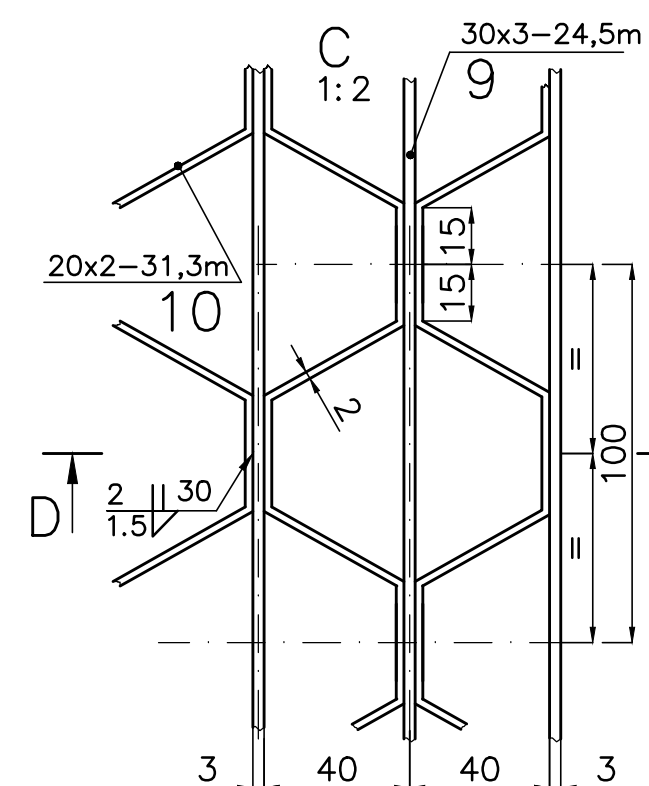
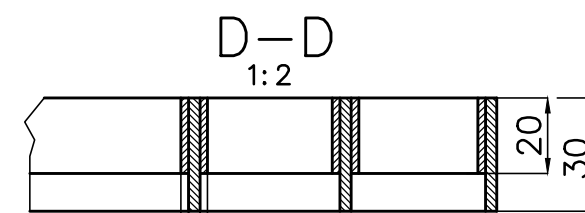
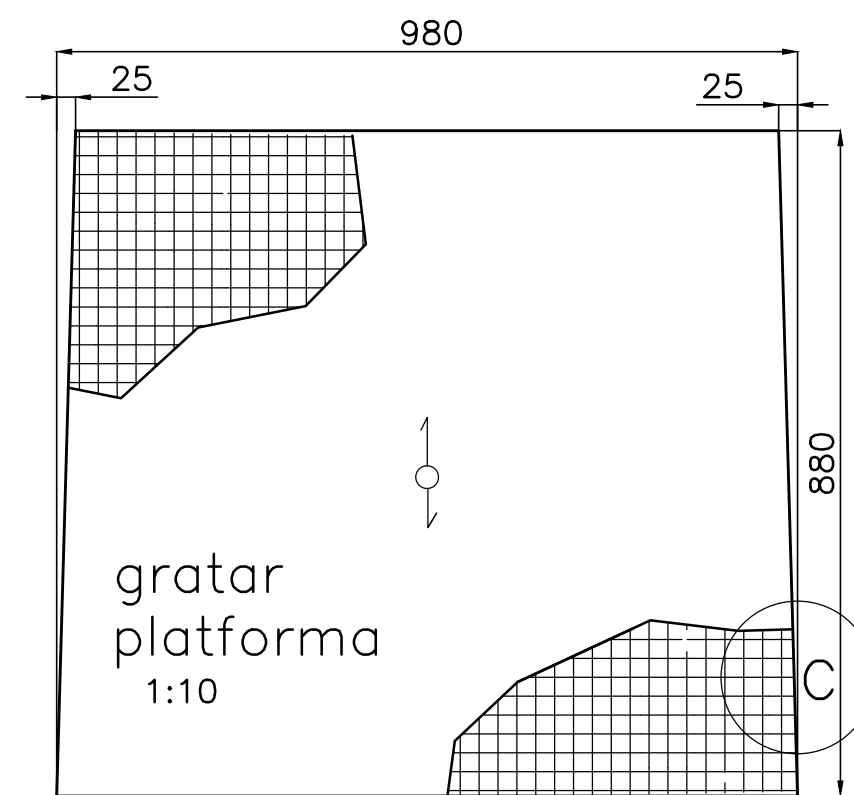
Cadru platforma intermediara



Detaliu B



Scara elicoidala tronson 1
Desen nr. A614-03.01



| | | | | | | | |
|---|---------------------|---------------------|------------|------------------|---|------------------------|--------|
| 11 | Consola scara | A614U-03.04 | 2 | | | 24,24 | |
| 10 | Bara distributie | SR EN 10025-2:2004 | 1 | S235J2 | 20x2-31,3m | 9,8 | |
| 9 | Bara portanta | SR EN 10025-2:2004 | 1 | S235J2 | 30x3-24,5m | 17,3 | |
| 8 | Aparatoare picior | SR EN 10025-2:2004 | 1 | S235J2 | 100x3-840 | 2,0 | |
| 7 | Aparatoare genunchi | SR EN 10025-2:2004 | 1 | S235J2 | 40x4-1000 | 1,3 | |
| 6 | Mana curenta | SR EN 10025-2:2004 | 1 | S235J2 | L50x50x5-1000 | 3,8 | |
| 5 | Montant | SR EN 10025-2:2004 | 2 | S235J2 | L50x50x5-1150 | 4,4 | |
| 4 | Element rama | SR EN 10025-2:2004 | 1 | S235J2 | U8-944 | 8,2 | |
| 3 | Element rama | SR EN 10025-2:2004 | 1 | S235J2 | U8-988 | 8,6 | |
| 2 | Element rama | SR EN 10025-2:2004 | 1 | S235J2 | U8-900 | 7,8 | |
| 1 | Element rama | SR EN 10025-2:2004 | 1 | S235J2 | U8-900 | 7,8 | |
| | Electrozi | SR EN ISO 2560:2010 | | | | 3 | |
| Poz. | DENUMIREA | Nr.DESEN sau STAS | BUC. | MATERIAL | OBS. | Masa kg/buc | |
| 3 | | | | 6 | | | |
| 2 | | | | 5 | | | |
| 1 | | | | 4 | | | |
| Rev. | Descriere | Data | Semnat | Rev. | Descriere | Data | Semnat |
| Acest document este proprietatea S.C. ELLIS'92 S.R.L. si nu va fi comunicat fara autorizare | | | | | | | |
| Intocmit | Verificat | Aprobat | Beneficiar | | Denumire proiect | | |
| S.B. | N.R. | A.I. | CONPET SA | | DEZAFECTARE REZERVOR R9 TITEL (V=2889 mc) CONSTRUCTIE REZERVOR NOU PENTRU TITEL (V=2500 mc) STATIA DE POMPARE CARTOJANI | | |
| 92 ELLIS'92 arhitectura proiectare inginerie consultanta tehnica | | | | SR EN ISO 9001 | | PLATFORMA INTERMEDIARA | |
| | | | | Nr.: A614U-03.02 | | Rev.0 | |
| | | | | Scara: 1:100 | | DDE | |
| | | | | Index: A614U-BD | | | |
| Material: | | | | Masa: 103kg | | Data: 04.2017 | |
| | | | | | | Plansa: 1/1 | |